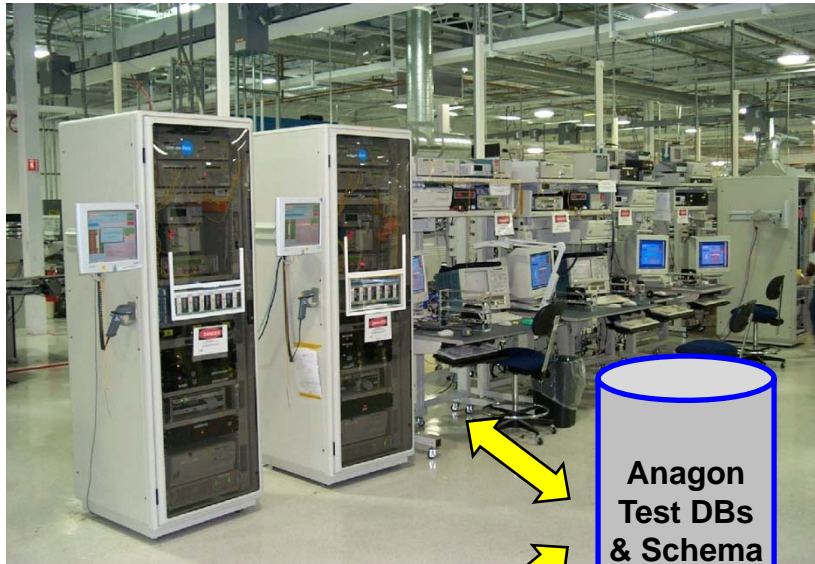


To Understand Your Process, You Must Automatically Control And Manage The Manufacturing Floor.

Complex Products Are Fabricated, Inspected, Programmed, And Tested In Defined Steps, Before Shipping To Customers.

Mistakes May Occur As Hundreds Of Units Are Moved And Processed At Different Test Stations By Low Skilled Personnel.

AMacss™ Eliminates Floor Chaos And Ensures That Each Product Is Correctly Routed To All Specified Process Steps.



Anagon
Test DBs
& Schema



AMacss™ Uses A Powerful Model Of The Manufacturing Floor And Its Processes.

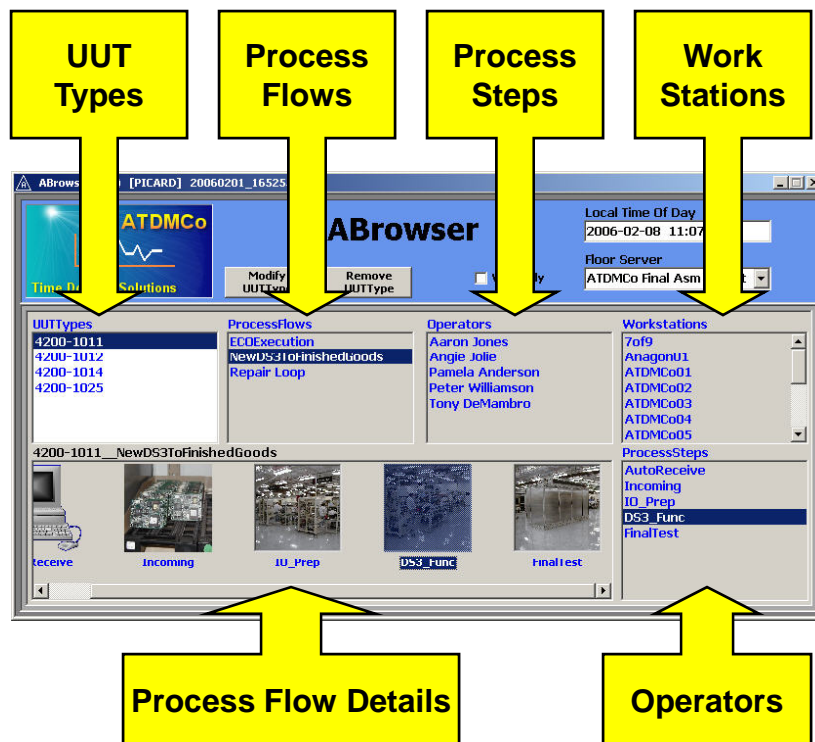
Based On Years Of Practical Manufacturing Experience, Anagon Has Developed A Flexible Data Model That Embodies AMacss.

Your Actual Test Stations, Process Steps, UUT Types, Operators, And Process Flows Can Be Modeled Directly Into The System.

The Model Is Read Instantaneously By All Test Stations On The Floor, Thus Providing Control And Management Automatically.

ABrowser™ Provides An Easy To Use, Graphical User Interface To Input And Maintain Your Model.

Main ABrowser™ Screen



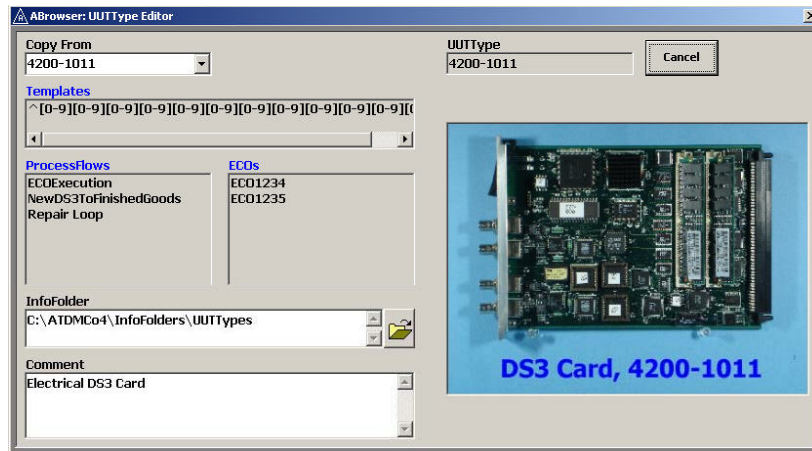
The Main Screen Provides An Executive Overview Of The Floor, Highlighting The Relationships Among Major Floor Objects.

The Major AMacss Objects Are: UUTType*, ECO, ProcessFlow, ProcessStep, Workstation, And Operator.

Each Object Has Its Own Editor, Which Allows Your Administrator To Add, Modify, Or Remove It.

* UUT Stands For "Unit Under Test". UUTType Corresponds To Any Part Number That AMacss Works On.

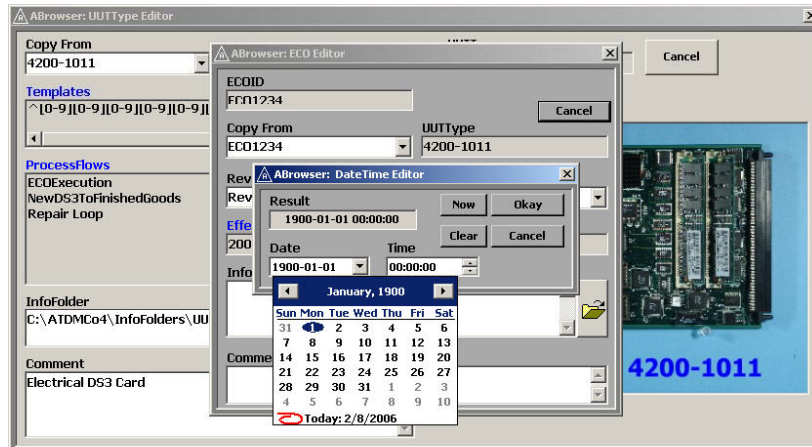
UUTType Editor



ABrowser™ Provides An Easy To Use, Graphical User Interface To Input And Maintain Your Model.

UUTType (Part Number) Is “What” Is Being Tested. Typically, Several Different Types Of Units Are On The Floor.

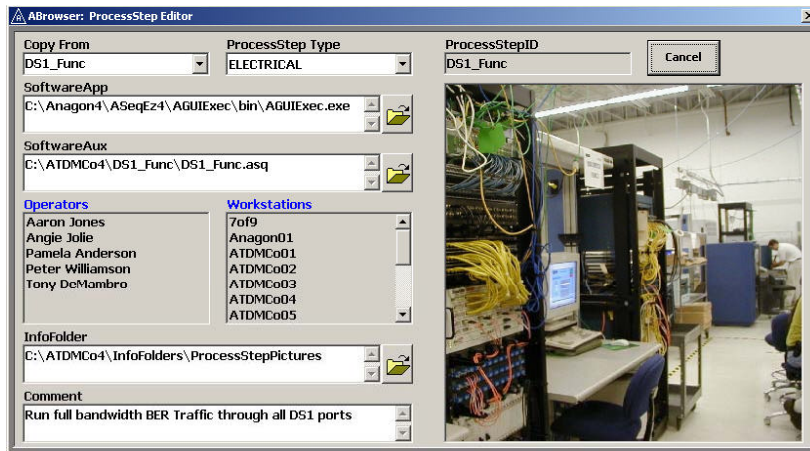
ECO Editor



Generally, Each UUTType Is Tested Along Different ProcessFlows And Has A Unique ECO History.

ECO's Document Engineering Changes To UUTTypes. As Each ECO Is Sent To The Floor, Routing Is Automatically Adjusted.

ProcessStep Editor



ABrowser™ Provides An Easy To Use, Graphical User Interface To Input And Maintain Your Model.

ProcessSteps Are Value Added Operations That Are Performed On UUTs (Inspection, Repair, Programming, Electrical Test).

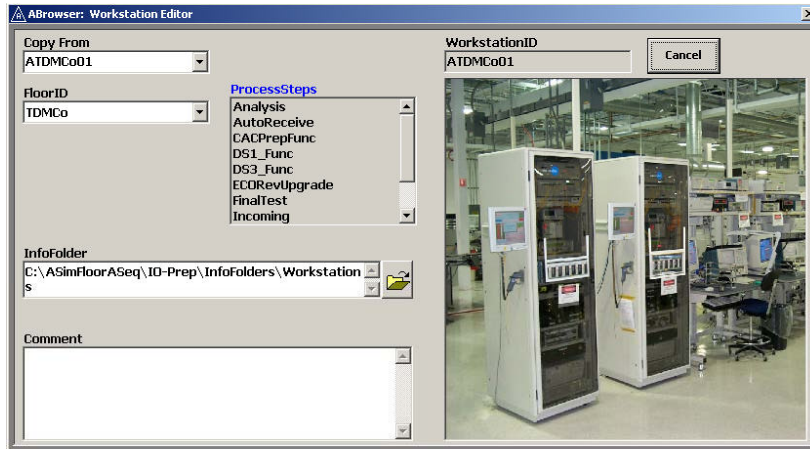
ProcessSteps, Such As “DS1_Func”, Execute Customized Test Sequences Developed By Test Engineers Using Anagon’s ATest™.

ProcessFlow Editor



ProcessFlows Specify An Ordered Set Of ProcessSteps That Accomplish A Collective Goal (“NewDS3ToFinishedGoods”).

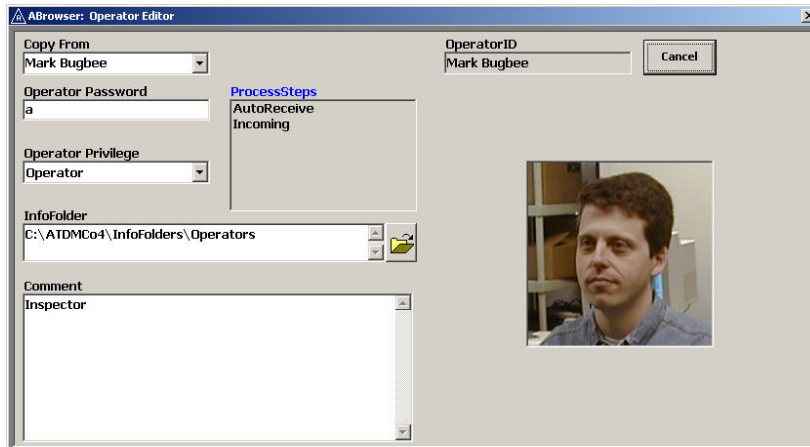
Workstation Editor



ABrowser™ Provides An Easy To Use, Graphical User Interface To Input And Maintain Your Model.

Workstations Are Physical Collections Of Equipment On Which ProcessSteps Are Executed Against UUTs.

Operator Editor



Workstations Typically Consist Of Fixtures, Computers, Electronic Instruments, Bar Code Scanners, Cabinetry, And Cabling.

Operators Are People Who Work On The Floor. Different Roles Are Modeled. Passwords And Privilege Levels Are Stored.

ATraveler (TM) Current Build = 20060112_101733

ATDMCo
Time Domain Solutions

ATraveler™
UUTID = 215092203095

UUTType = 4200-1014 Revision = Rev13 Currently At: :: AutoShip



DS1 Card, 4200-1014

Assembly Status

- Current UUTType = 4200-1014
- Current ECO = ECO_4412
- Current Revision = Rev13
- Latest ECO = ECO_4412
- Latest Revision = Rev13

Current Genealogy

- LDR200 System 4400-1522: 215092206128
 - DS1 Card 4200-1014: 215092203095**
 - DS1 PortAsm 3800-1254: 215088203031
 - 16Gig Mem 3800-1889: 215065203068
 - 16Gig Mem 3800-1889: 215065203073
 - DS3 Card 4200-1011: 215092203047
 - 64Gig Mem 3800-1867: 215065203022
 - 64Gig Mem 3800-1867: 215065203015

Events: 4 Steps: 18 Meas: 53 Details 2005-03-14 09:31:28.812

215092203095 -- AutoReceive

- Received UUTID Onto Floor

215092203095 -- Incoming

- UUT Identified
- Verify Identifying Labels
- Perform Label Side Inspection
- Next ProcessStep Computed

215092203095 -- Incoming

- UUT Identified
- Verify Identifying Labels
- Perform Label Side Inspection
- Perform ASIC Side Inspection
- Next ProcessStep Computed

215092203095 -- IO_Prep

- UUT Identified
- UUT Part Number Revision Labels
- UUT Supply Current
- UUT Boot Up
- Measure Test Points
- Program EEPROM
- Verify EEPROM
- Next ProcessStep Computed

EVENT DETAILS

UUTID = "215092203095"

UUTType = "4200-1014"

Revision = "Rev13"

Event_DateTime = "2005-03-11 14:04:46.307"

Event_Duration = "0"

FloorID = "KBELL"

ProcessFlowID = "NewDS1ToFinishedGoods"

ProcessStepID = "AutoReceive"

WorkstationID = "ATDMCo1"

OperatorID = "Aaron Jones"

ATraveler™ Provides Detailed History Of Any Individual UUT.

UUT Status Such As: Revision, ECO, And Genealogy Is Shown.

All Events, Steps, And Measurements Are Shown In Chronological Order.

Details Of Events, Steps, And Measurements Are Shown.