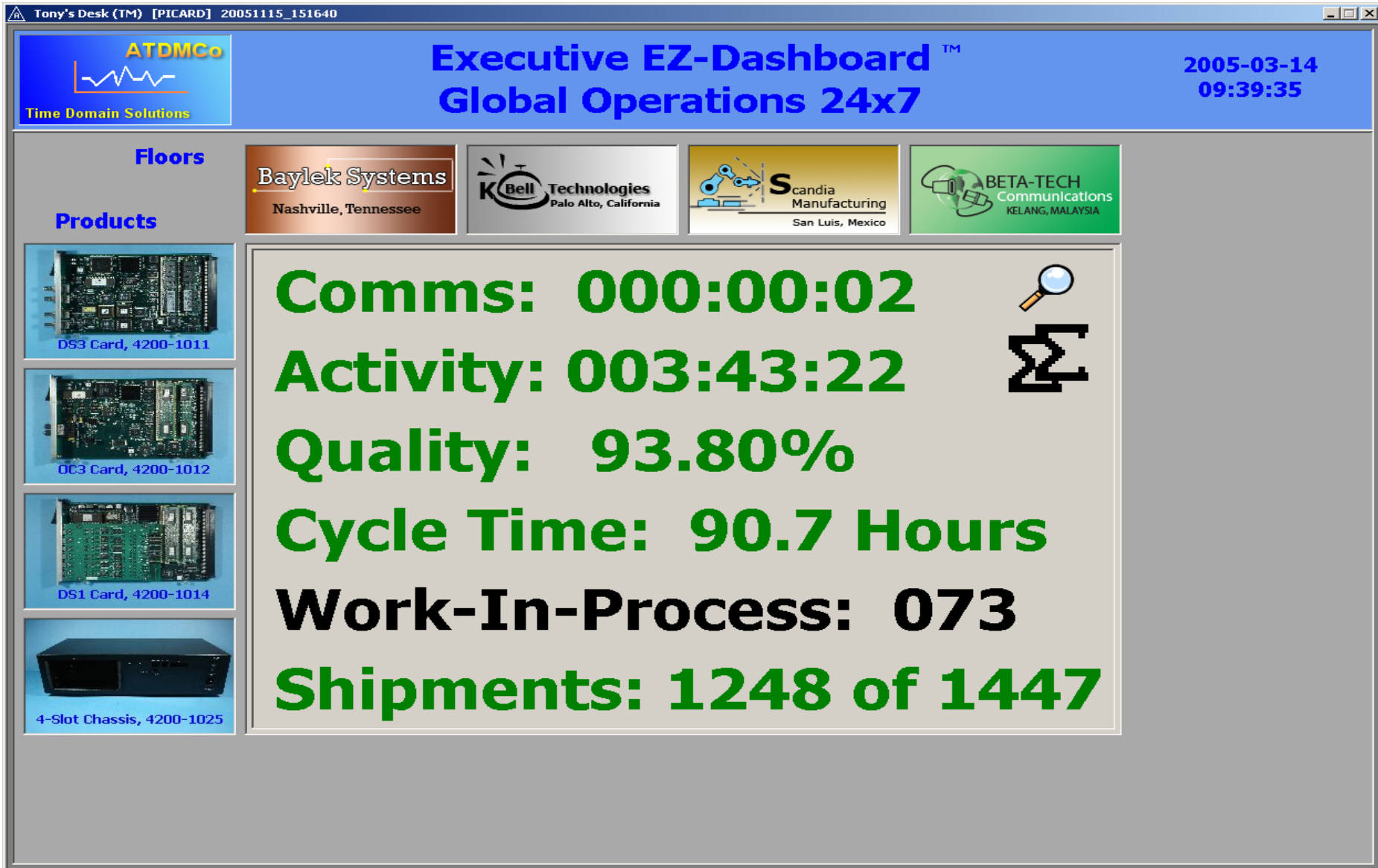


Executive EZ Dashboard Details





Executive EZ Dashboard Details

At Each Remote Manufacturing Floor, Precise, Comprehensive, Tests Are Made On Every Unit!

As Each Unit Is Tested ...

... Every Measurement Can Be Saved !!

Acquire Prompt = >
Measure Test Points
Test Point TP11 = 4.206424
Test Point TP06 = 13.16721
Test Point TP21 = 42.38121
Test Point TP23 = 21.17937
Test Point TP18 = 9.048774
Program EEPROM

Executive EZ Dashboard Details

As Each Set Of Measurements Is Acquired, Our
Proprietary Software Instantly Recalculates
Your Critical Floor Metrics!

Comms: 000:00:03
Activity: 002:50:57
Quality: 95.31%
Cycle Time: 79.6 Hours
Work-In-Process: 003
Shipments: 101 of 120

Acquire Prompt =>
Measure Test Points
Test Point TP11 = 4.206424
Test Point TP06 = 13.16721
Test Point TP21 = 42.38121
Test Point TP23 = 21.17937
Test Point TP18 = 9.048774
Program EEProm

Acquire Prompt =>
Measure Test Points
Test Point TP11 = 4.206424
Test Point TP06 = 13.16721
Test Point TP21 = 42.38121
Test Point TP23 = 21.17937
Test Point TP18 = 9.048774
Program EEProm

Acquire Prompt =>
Measure Test Points
Test Point TP11 = 4.206424
Test Point TP06 = 13.16721
Test Point TP21 = 42.38121
Test Point TP23 = 21.17937
Test Point TP18 = 9.048774
Program EEProm

Acquire Prompt =>
Measure Test Points
Test Point TP11 = 4.206424
Test Point TP06 = 13.16721
Test Point TP21 = 42.38121
Test Point TP23 = 21.17937
Test Point TP18 = 9.048774
Program EEProm

Test Point TP11 = 4.206424
Test Point TP06 = 13.16721
Test Point TP21 = 42.38121
Test Point TP23 = 21.17937
Test Point TP18 = 9.048774
Program EEProm

Test Point TP11 = 4.206424
Test Point TP06 = 13.16721
Test Point TP21 = 42.38121
Test Point TP23 = 21.17937
Test Point TP18 = 9.048774
Program EEProm

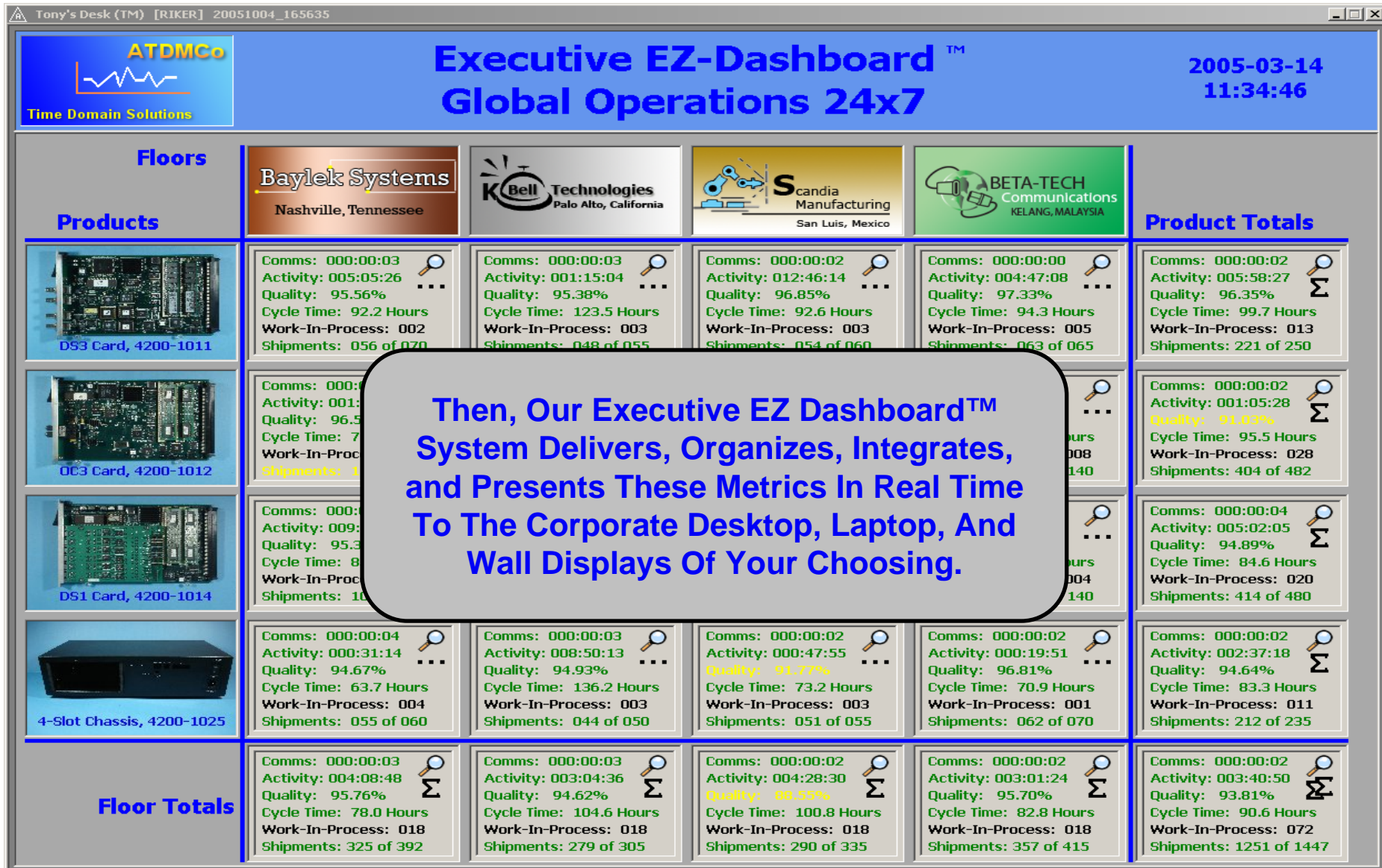
Acquire Prompt =>
Measure Test Points
Test Point TP11 = 4.206424
Test Point TP06 = 13.16721
Test Point TP21 = 42.38121
Test Point TP23 = 21.17937
Test Point TP18 = 9.048774
Program EEProm

Acquire Prompt =>
Measure Test Points
Test Point TP11 = 4.206424
Test Point TP06 = 13.16721
Test Point TP21 = 42.38121
Test Point TP23 = 21.17937
Test Point TP18 = 9.048774
Program EEProm

Acquire Prompt =>
Measure Test Points
Test Point TP11 = 4.206424
Test Point TP06 = 13.16721
Test Point TP21 = 42.38121
Test Point TP23 = 21.17937
Test Point TP18 = 9.048774
Program EEProm

Acquire Prompt =>
Measure Test Points
Test Point TP11 = 4.206424
Test Point TP06 = 13.16721
Test Point TP21 = 42.38121
Test Point TP23 = 21.17937
Test Point TP18 = 9.048774
Program EEProm

Executive EZ Dashboard Details



Executive EZ Dashboard Details



Executive EZ Dashboard Details



Executive EZ Dashboard Details

Tony's Desk (TM) [PICARD] 20051115_151640


Time Domain Solutions

You Can Get Trustworthy Answers To Important High Level Questions In Seconds Instead Of Days!

2005-03-14
09:39:35

Floors

Products


D53 Card, 4200-1011


OC3 Card, 4200-1012


DS1 Card, 4200-1014


4-Slot Chassis, 4200-1025

Baylek Systems
Nashville, Tennessee

Are My Total Shipments On Track For This Quarter ?

BETA-TECH Communications
KELANG, MALAYSIA

Comms: 000:00:02

Activity: 003:43:22

Quality: 93.80%

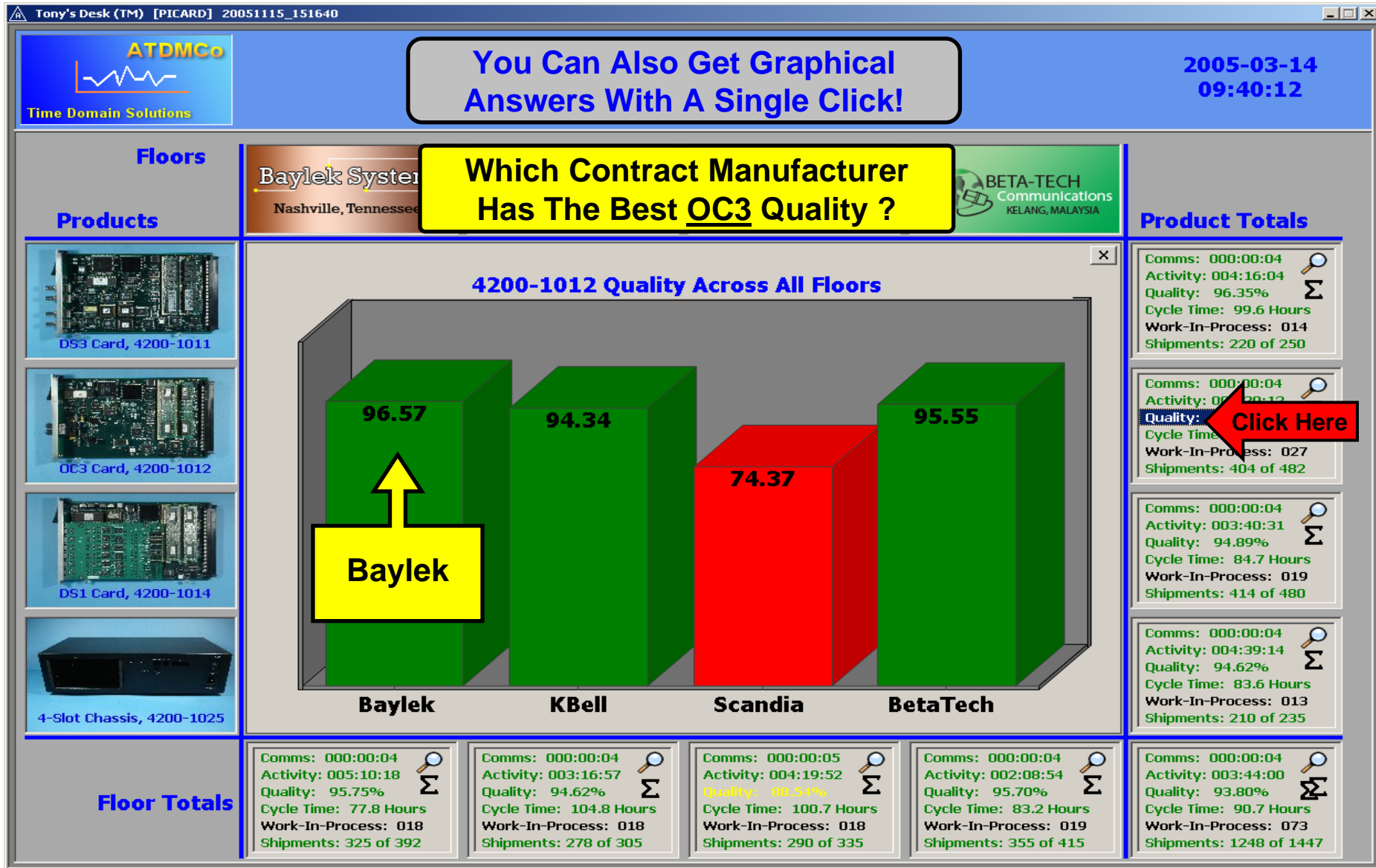
Cycle Time: 90.7 Hours

Work-In-Process: 073

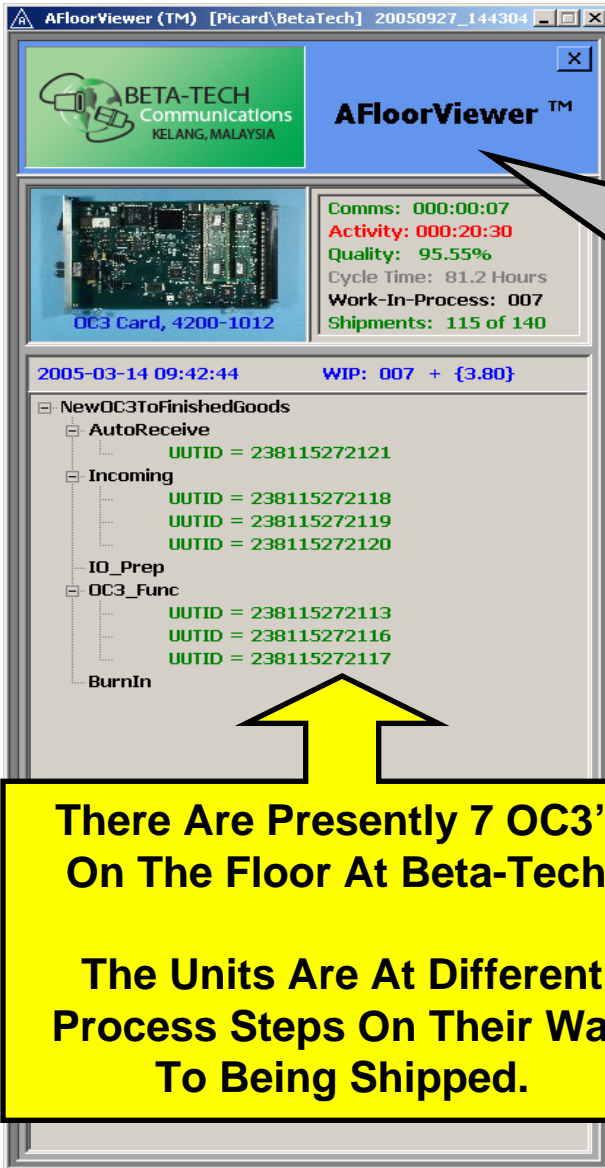
Shipments: 1248 of 1447

Yes !

Executive EZ Dashboard Details



Executive EZ Dashboard Details



AFloorViewer™

Comms: 000:00:07
Activity: 000:20:30
Quality: 95.55%
Cycle Time: 81.2 Hours
Work-In-Process: 007
Shipments: 115 of 140

2005-03-14 09:42:44 WIP: 007 + {3.80}

- NewOC3ToFinishedGoods
 - AutoReceive
 - UUTID = 238115272121
 - Incoming
 - UUTID = 238115272118
 - UUTID = 238115272119
 - UUTID = 238115272120
 - IO_Prep
 - OC3_Func
 - UUTID = 238115272113
 - UUTID = 238115272116
 - UUTID = 238115272117
 - BurnIn

There Are Presently 7 OC3's On The Floor At Beta-Tech.

The Units Are At Different Process Steps On Their Way To Being Shipped.

If You Need Backup Details, Simply Click On The Cell Of Interest And Anagon's AFloorViewer™ Provides Detailed Status Within The Contract Manufacturer Floor!

060	Shipments: 063 of 065	Ship
...	Comms: 000:00:04 Activity: 000:08:25 Quality: 95.55% Cycle Time: 81.2 Hours Work-In-Process: 007 Shipments: 115 of 140	Con
009	Comms: 000:00:03 Activity: 000:45:30	Con
100		Act


Click Here

Executive EZ Dashboard Details

AFloorViewer (TM) [Picard\BetaTech] 20050927_144304

BETA-TECH
Communications
KELANG, MALAYSIA

AFloorViewer™


OC3 Card, 4200-1012

Comms: 000:00:01
Activity: 000:21:52
Quality: 95.55%
Cycle Time: 81.2 Hours
Work-In-Process: 007
Shipments: 115 of 140

2005-03-14 09:44:06 Shipments: 115

UUTID = 238115272042
UUTID = 238115272043
UUTID = 238115272044
UUTID = 238115272045
UUTID = 238115272046
UUTID = 238115272047
UUTID = 238115272048
UUTID = 238115272049

050

UUTID = 238115272050
UUTID = 238115272051
UUTID = 238115272052
UUTID = 238115272053
UUTID = 238115272054
UUTID = 238115272055
UUTID = 238115272056
UUTID = 238115272057
UUTID = 238115272058
UUTID = 238115272059

060

UUTID = 238115272060
UUTID = 238115272061
UUTID = 238115272062
UUTID = 238115272063
UUTID = 238115272064
UUTID = 238115272065
UUTID = 238115272066
UUTID = 238115272067
UUTID = 238115272068
UUTID = 238115272069

070

UUTID = 238115272070
UUTID = 238115272071

We Can Also Examine Units
That Have Already Shipped !

Click Here

Here Are The 115
Shipped Units.

AFloorViewer™
BETA-TECH Communications
KELANG, MALAYSIA

Comms: 000:00:01
Activity: 000:25:21
Quality: 95.55%
Cycle Time: 81.2 Hours
Work-In-Process: 007
Shipments: 115 of 140

OC3 Card, 4200-1012

2005-03-14 09:47:35 Shipments: 115

070
UUTID = 238115272070
UUTID = 238115272071
UUTID = 238115272072
UUTID = 238115272073
UUTID = 238115272074
UUTID = 238115272075
UUTID = 238115272076
UUTID = 238115272077
UUTID = 238115272078
UUTID = 238115272079

080
UUTID = 238115272080

090
UUTID = 238115272095
UUTID = 238115272096
UUTID = 238115272097
UUTID = 238115272098
UUTID = 238115272099

ATraveler™
UUTID = 238115272073

UUTType = 4200-1012 Revision = Rev4 Currently At: :: AutoShip

Events: 7 Steps: 34 Meas: 84

238115272073 -- IO_Prep

- UUT Identified
 - UUTID = 238115272073
- UUT Part Number Revision Labels
 - Acquire Part Number Label = 4200-1012
 - Verify Part Number Label = 4200-1012
 - Acquire Revision Label = Rev4
 - Verify Revision Label = Rev4
- UUT Supply Current
 - Power Off = 0.01006047
 - Power On = 1.311601
- UUT Boot Up
 - Service Diagnostic Version = 3.1.04
 - Application Version = 1.23.10C
 - Acquire Prompt = >
- Measure Test Points
 - Test Point 1 = 12.2229
 - Test Point 2 = 41.46489
 - Test Point 3 = 12.2229
 - Test Point 4 = 41.46489
 - Test Point 5 = 12.2229
 - Test Point 6 = 41.46489
 - Test Point 7 = 12.2229
 - Test Point 8 = 41.46489
 - Test Point 9 = 12.2229
 - Test Point 10 = 41.46489
 - Test Point 11 = 12.2229
 - Test Point 12 = 41.46489
 - Test Point 13 = 12.2229
 - Test Point 14 = 41.46489
 - Test Point 15 = 12.2229
 - Test Point 16 = 41.46489
 - Test Point 17 = 12.2229
 - Test Point 18 = 41.46489
 - Test Point 19 = 12.2229
 - Test Point 20 = 41.46489
 - Test Point 21 = 12.2229
 - Test Point 22 = 41.46489
 - Test Point 23 = 12.2229
 - Test Point 24 = 41.46489
 - Test Point 25 = 12.2229
 - Test Point 26 = 41.46489
 - Test Point 27 = 12.2229
 - Test Point 28 = 41.46489
 - Test Point 29 = 12.2229
 - Test Point 30 = 41.46489
 - Test Point 31 = 12.2229
 - Test Point 32 = 41.46489
 - Test Point 33 = 12.2229
 - Test Point 34 = 41.46489
 - Test Point 35 = 12.2229
 - Test Point 36 = 41.46489
 - Test Point 37 = 12.2229
 - Test Point 38 = 41.46489
 - Test Point 39 = 12.2229
 - Test Point 40 = 41.46489
 - Test Point 41 = 12.2229
 - Test Point 42 = 41.46489
 - Test Point 43 = 12.2229
 - Test Point 44 = 41.46489
 - Test Point 45 = 12.2229
 - Test Point 46 = 41.46489
 - Test Point 47 = 12.2229
 - Test Point 48 = 41.46489
 - Test Point 49 = 12.2229
 - Test Point 50 = 41.46489
 - Test Point 51 = 12.2229
 - Test Point 52 = 41.46489
 - Test Point 53 = 12.2229
 - Test Point 54 = 41.46489
 - Test Point 55 = 12.2229
 - Test Point 56 = 41.46489
 - Test Point 57 = 12.2229
 - Test Point 58 = 41.46489
 - Test Point 59 = 12.2229
 - Test Point 60 = 41.46489
 - Test Point 61 = 12.2229
 - Test Point 62 = 41.46489
 - Test Point 63 = 12.2229
 - Test Point 64 = 41.46489
 - Test Point 65 = 12.2229
 - Test Point 66 = 41.46489
 - Test Point 67 = 12.2229
 - Test Point 68 = 41.46489
 - Test Point 69 = 12.2229
 - Test Point 70 = 41.46489
 - Test Point 71 = 12.2229
 - Test Point 72 = 41.46489
 - Test Point 73 = 12.2229
 - Test Point 74 = 41.46489
 - Test Point 75 = 12.2229
 - Test Point 76 = 41.46489
 - Test Point 77 = 12.2229
 - Test Point 78 = 41.46489
 - Test Point 79 = 12.2229
 - Test Point 80 = 41.46489
 - Test Point 81 = 12.2229
 - Test Point 82 = 41.46489
 - Test Point 83 = 12.2229
 - Test Point 84 = 41.46489

EVENT DETAILS

UUTID = "238115272073"

UUTType = "4200-1012"

Revision = "Rev4"

Event_DateTime = "2005-02-15 18:34:50.817"

Event_Duration = "161.496"

FloorID = "BETA-TECH"

ProcessFlowID = "NewOC3ToFinishedGoods"

ProcessStepID = "IO_Prep"

WorkstationID = "ATDMCo1"

OperatorID = "Aaron Jones"

Event_Status = "FAILED"

ProductionStatus = "PSTATUS_NORMAL"

YieldInfo = "YIELD_NA"

Perfect For Engineering, Anagon's ATraveler™ Toolset Provides An Organized, Detailed Manufacturing History For Any Individual Unit Produced! Every Event, Every Test Step, And Every Measurement!

Executive EZ Dashboard Details

